

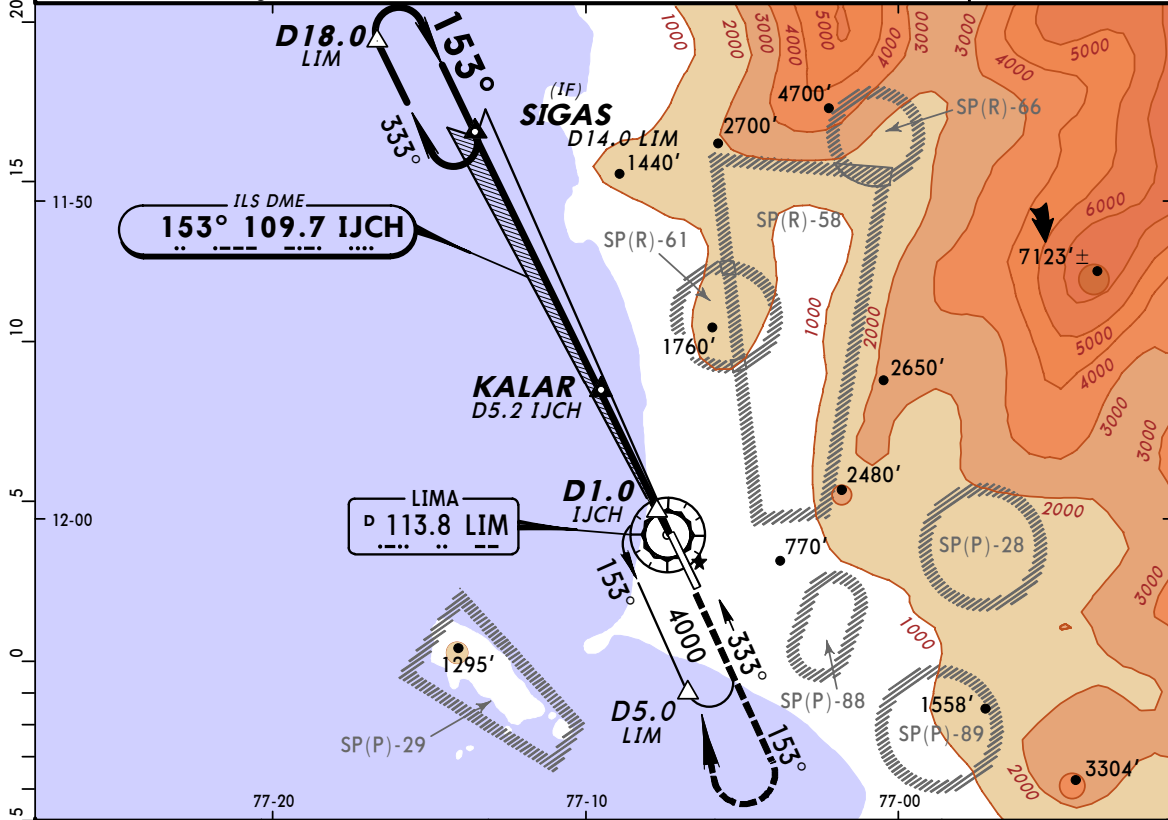
SPIM/LIM
JORGE CHAVEZ INTL

JEPPESEN

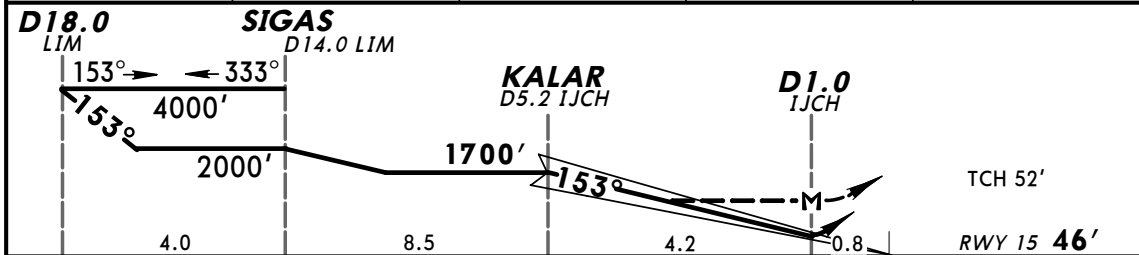
7 NOV 03 (11-1)

LIMA-CALLAO, PERU
DESCENT WHISKEY
VOR DME-ILS DME Rwy 15

BRIEFING STRIP™	ATIS 127.9		LIMA Approach (R) 119.7		INTL Tower 118.1		Ground 121.9	
	LOC IJCH 109.7	Final Apch Crs 153°	No FAF		ILS DA(H) 295' (249')	Apt Elev 113' RWY 15 46'		
	MISSED APCH: Climb outbound on LIM VOR R-153 to 2000' then turn RIGHT and proceed to LIM VOR and hold at 4000'.							
Alt Set: hPa Rwy Elev: 2 hPa Trans level: By ATC Trans alt: 4000' 1. ILS DME associated with the glide path (0.2 NM from Rwy 15 threshold). 2. Max IAS in circling 200 kts.								



LOC (GS out)	IJCH DME	4.0	3.0	2.0
	ALTITUDE	1320'	1000'	680'



Gnd speed-Kts	70	90	100	120	140	160	HIALS 	2000' on LIM 113.8 R-153 RT LIM 113.8
GS	3.00°	377	484	538	646	861		
Rate of descent (feet/min)		373	480	533	640	853		
MAP at D1.0 IJCH								

PANS OPS	STRAIGHT-IN LANDING RWY15				CIRCLE-TO-LAND	
	ILS DA(H) 295' (249')		LOC (GS out) MDA(H) 370' (324')		Not Authorized East of Airport	
	FULL	ALS out	FULL	ALS out	MDA(H)	
	A				850'(737')-5.0 km	
	B					
C	800m	1200m	1600m			
D						